

37x/33x High-Resolution Network PTZ Dome Camera

SNP-3750/3350



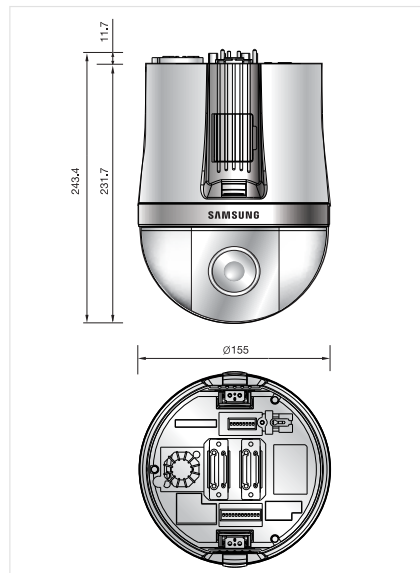
Specifications

		SNP-3750N	SNP-3750P	SNP-3350N	SNP-3350P
VIDEO					
Imaging Device		1/4 inch, Vertical Double Density Interline CCD			
Total Pixels		811(H) x 508(V)	795(H) x 596(V)	811(H) x 508(V)	795(H) x 596(V)
Effective Pixel		768 (H) X 494 (V)	752 (H) X 582 (V)	768 (H) X 494 (V)	752 (H) X 582 (V)
Scanning System		2 : 1 Interlace			
Frequency		H : 15.734 KHz V : 59.94 Hz	H : 15.625 KHz V : 50.00 Hz	H : 15.734 KHz V : 59.94 Hz	H : 15.625 KHz V : 50.00 Hz
Horizontal Resolution		Color : 550TV Lines (Min.), B/W : 680TV Lines (Min.)			
Min. Illumination (Analog Video Output)		Color : 0.7Lux (50 IRE@F1.6), 0.002Lux (Sens-up, 256X) B/W : 0.03Lux (50 IRE@F1.6)			
S/N (Y signal)		50dB			
On Screen Display		Built-In (Web viewer)			
Camera Title		On/Off (Web viewer)			
ID (Camera Address)		1 ~ 255			
Day & Night		Auto (ICR) / Color / B/W			
Backlight Compensation		WDR / BLC / HLC / OFF			
Dynamic Range		52dB			
Motion Detection		On/Off (Web viewer)			
Digital Image Stabilization		On/Off			
Privacy Masking		On/Off (8 Programmable zones)			
3D Noise Filter (SSNR11)		Low / Medium / High / Off			
Sens-up (Frame Integration)		On/Off (Selectable limit ~ 256X)			
Gain Control		Low / Medium / High / Off			
White Balance		ATW / AWC / Manual / Indoor / Outdoor			
Electronic Shutter Speed		Auto (NTSC : 1/60~120,000sec, PAL : 1/50~1/120,000) / Manual / A.FLK			
LENS					
Zoom Ratio		37X (Optical), 12X (Digital)		33X (Optical), 12X (Digital)	
Focal Length		3.5 ~ 129.5mm (F1.6 to 3.9)		3.5 ~ 115.5mm (F1.6 to 3.6)	
Max. Aperture Ratio		1:1.6 (Wide) ~ 3.9 (Tele)		1:1.6 (Wide) ~ 3.6 (Tele)	
Min. Object Distance		1.8m (5.91ft)		1.8m (5.91ft)	
Angular Field of View		H : 55.5° (Wide) ~ 1.59° (Tele) V : 42.5° (Wide) ~ 1.19° (Tele)		H : 55.5° (Wide) ~ 1.77° (Tele) V : 42.5° (Wide) ~ 1.33° (Tele)	
Focus		Auto / Manual / One-push			
Zoom Movement Speed		2.5 Sec		2.2 Sec	
IRIS Control		Auto / Manual			
PAN / TILT					
Pan Range		360°			
Pan Speed		Preset : 400°/sec, Manual : 0.024°~120°/sec (Proportional Zoom Ratio)			
Tilt Range		-15° ~ 195°			
Tilt Speed		Preset : 400°/sec, Manual : 0.024°~120°/sec (Proportional Zoom Ratio)			
Preset Positions		255			
Preset Accuracy		±0.1°			
PTZ mode		Preset, Swing, Group, Tour			
PERFORMANCE					
Encoding	Resolution	Up to 704 x 480 (NTSC), Up to 704 x 576 (PAL)			
	Compression	MPEG-4 / JPEG Dual Codec			
Network	Encode Rate	Up to 30fps@704 x 480 (NTSC), Up to 25fps@704 x 576 (PAL)			
	Transmission Speed	Up to 100Mbps			
	Remote users Maximum	20simultaneously			
	Protocol support	RTP/UDP, RTP/Multicast, RTSP, TCP/IP, DHCP, DNS, DDNS, HTTP, SMTP, FTP			
Security	Video Analytics	Object Detection (Missing Object)			
	Password Protection	5User Level			
INTERFACE					
Monitor	Output	1BNC (adapter)			
	Input	1Microphone connector, Line in (1Vpp) / MIC in (2K ohm)			
Audio	Output	1Microphone connector, Line out (1Vpp)			
	Compression	ADPCM			
Alarm	Sampling Rate	8KHz			
	Inputs	Terminal 4input, NO/NC			
	Outputs	Terminal 2output, NO/NC			
	Remote notification	Via e-mail or FTP			
Connections	Ethernet	RJ-45 10/100 Base-T			
	Standard Interface	RS-485/422			
Serial Remote Control	Connection Speed	2400, 4800, 9600, 19200 bps			
	Protocol Support	S-Protocol, Pelco-D, Pelco-P, Panasonic, Vicon, AD, Honeywell, Bosch, GTE, SEC, Sungjin, Convex			
Storage	SD(SDHC) Memory	Stored event image, Back-up			
GENERAL					
Input Voltage		24V AC ±10%			
Power Consumption		Max. 16W			
Operating Temperature/Humidity		-10°C ~ +50°C / 20% ~ 80% RH			
Dimension (Ø x D)		Ø155 x 243.4mm (Ø6.1" x 9.58")			
Weight		About 2Kg (4.41lb)			

Design and specifications are subject to change without notice.

Dimensions

Unit : mm (inch)



The Eco mark represents Samsung Techwin's will to create environment-friendly products, and indicates that the product satisfies the EU RoHS Directive.

SAMSUNG
SAMSUNG TECHWIN

SAMSUNG TECHWIN CO., LTD.

145-3, Sangdaewon 1-dong, Jungwon-gu, Seongnam-si, Gyeonggi-do Korea 462-703
Tel : +82-31-740-8151-8 Fax : +82-31-740-8145
www.samsungipolis.com

SAMSUNG TECHWIN AMERICA Inc.
1460 Charles Willard St, Carson, CA 90746, UNITED STATES
Tel Free : +1-877-213-1222 Fax : +1-310-632-2195
www.samsungcctvusa.com

SAMSUNG TECHWIN EUROPE CO., LTD.
Samsung House, 1000 Hillwood Drive, Hillwood Business Park
Chertsey, Surrey, UNITED KINGDOM KT16 0PS
Tel : +44-1932-45-5300 Fax : +44-1932-45-5325

TIJIANJIN SAMSUNG TECHWIN OPTO-ELECTRONICS CO., LTD.
No.11 Wei 6 Street, Micro-Electronic Industrial Park
Jingang Road, Tianjin, P.R. CHINA 300385
Tel : +86-22-23887788 Fax : +86-22-23887788

DISTRIBUTED BY



SAMSUNG TECHWIN

iPOLiS

37X
Enhance Your
Network MonitoringConvenient Network Monitoring
with Up To 37x Optical Zoom

SNP-3750/3350

37x/33x High-Resolution Network PTZ Dome Camera

- MPEG-4 / JPEG dual codec
- Maximum 37x optical zoom (3.5mm~129.5mm)
- Real-time multi-streaming
- 64-channel central management software SVM-S1
- SD memory card



9-2009

www.samsungipolis.co.kr

I.E-0909



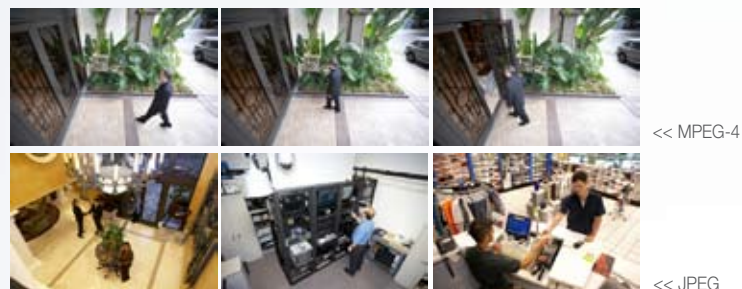
Up To 37x Optical Zoom

Real-Time Network Monitoring! SNP-3750/3350

MPEG-4/JPEG Dual Codec



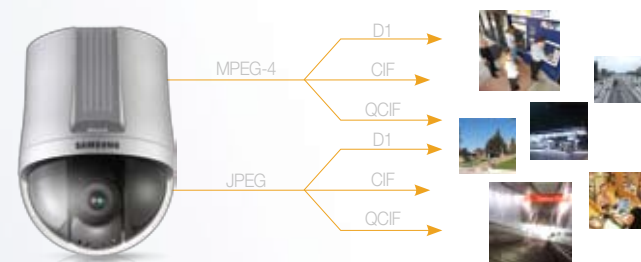
Embedded with an MPEG-4/JPEG dual codec, the SNP-3750/3350 achieves both a high data-compression rate and high-quality images. It can also transfer real-time, high-resolution video data at 30 fps (NTSC).



Multi-Streaming



Multi-streaming support in the SNP-3750/3350 lets it transfer a maximum of 6 different types of real-time videos—per resolution or per codec—at 30 fps (NTSC) to give the user a variety of video transfer options for optimum performance.



The SNP-3750/3350 high-resolution network PTZ dome camera is equipped with a powerful optical zoom to achieve a high resolution image of 550TVL and capture clear images of long-distance objects. In addition, this camera supports an MPEG-4/JPEG dual codec and multi-streaming technologies, transferring real-time high-resolution images at 30 fps (NTSC). And with its intelligent video analysis system, it can capture all objects coming in and out of view as well as save and transfer the image data to the Centralized Management Software (CMS) or network recorder.

iPOLiS



37x/33x Optical Zoom & Ultra-Low Light Levels of 0.7 Lux



The 37x/33x optical zoom captures clear images of long-distance objects while its 550TV high-resolution aids in accurate visual monitoring. With ultra-low light levels of 0.7 Lux, this camera is also ideal for nighttime monitoring.



Intelligent Video Analysis System



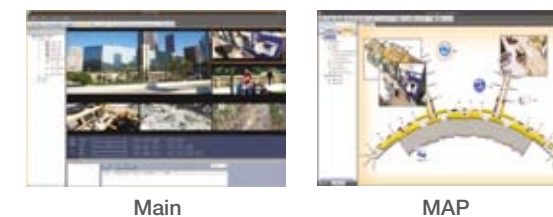
Embedded with an intelligent video analysis system (Object Appear/Disappear), the SNP-3750/3350 can capture all objects coming in and out of view, transfer the image data to the CMS or recording server, or save it to an SD memory card.



SVM-S1 Centralized Management Software (CMS)



SVM-S1 is our centralized network management software that is capable of managing a maximum of 64 channels. This software provides PTZ control commands, various event types and map monitoring options for a convenient and effective monitoring system.



SD Memory Card



The SNP-3750/3350 provides an SD memory card slot that can be used to save and backup event video data.

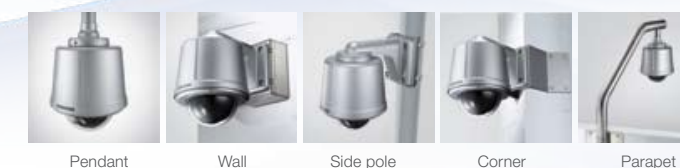
Installation Versatility



For enhanced installation convenience, the SNP-3750/3350 provides video output and RS-485 control options just like conventional analog cameras.

Various Exclusive Accessories

The SNP-3750/3350 provides a wide selection of accessories that facilitate installations anywhere, such as ceilings, walls, poles and parapets.



STH-360NPO	STH-370NPE	STB-370NPC	STB-270PWW	STB-496PPV
				

STB-25PF	STB-30PF	STB-270B	STB-330PPM	STB-340PCM	STB-350PPM
					